

## **KASD<sup>®</sup> Disposable Syringe Filter**

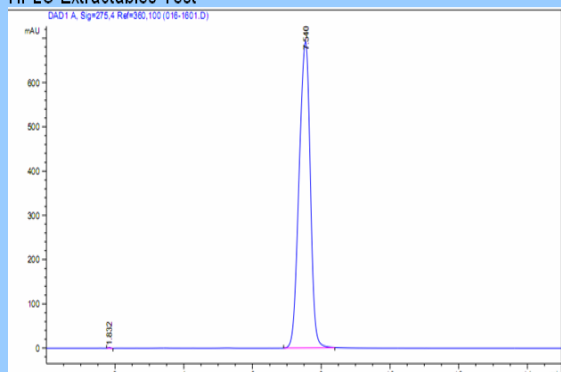
KASD<sup>®</sup> Syringe Filters are syringe-operated filters for the clarification of aqueous solutions (column eluates, tissue culture additives, HPLC samples, etc.). It is further to do the beautification appearance on general syringe filters basis and containing high quality membrane materials to make your experiment performance more perfect. Its design of color coding, make the products more beautiful and innovative. The Classic range is available in all of the major membranes including Nylon, PTFE, PVDF, CA and PES, which are supplied in 13mm, 25mm, 30mm formats in polypropylene housings.



### **Features:**

- **Color coding:** Easier to tell the filter membrane
- **Better membrane media:** Improved membrane flow rates
- **Application Compatibility:** Broad range of filtration media meets diverse application needs and best for chromatography application
- **Sterile:** Filters can be purchased pre-sterilized by Gamma radiation and individually packaged

### **HPLC Extractables Test**



Agilent 1200, Column: C18 UV = 254 nm,  
Mob.phase:MeOH/H<sub>2</sub>O:20:80, Temperature:  
25°C, Flow rate:0.8ml/min, sample:2mg/ml  
Bergenin(in Methanol)

### **Validated HPLC Performance**

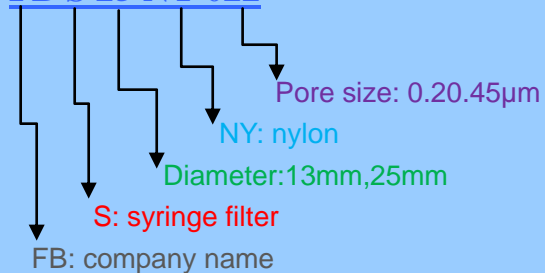
- HPLC certification which guarantees the filters will not produce extraneous peaks in the UV range.
- 100% integrity tested with higher burst strength ratings assuring they will perform consistently.
- Available in 13 and 25mm sizes and available in sterile, too.
- 0.45µm for most clarification applications and 0.22µm when fine particulate removal is required. Other pore size are available in 0.8µm to 5µm.

## Technical specifications

Parameters	13mm	25mm	30mm
Effective Filtration Area(cm <sup>2</sup> )	1.09	4.08	5.39
Maximum Pressure	87psi (6.0 bar) at 20 °C	87psi (6.0 bar) at 20 °C	87psi (6.0 bar) at 20 °C
Maximum Operating Temperature	50 °C	50 °C	50 °C
Materials of Construction	Housing: Polypropylene	Housing: Polypropylene	Housing: Polypropylene
Filtration Media	As specified		
Holdup volume (µl)	<25	<100	<200
Sample volume (ml)	<10	<100	<200
Connectors	Inlet: Female Luer Lock Outlet: Male Slip Luer	Inlet: Female Luer Lock Outlet: Male Slip Luer	Inlet: Female Luer Lock Outlet: Male Slip Luer
Flow Direction	Inlet: Female Luer Lock Outlet: Male Slip Luer (MSL)	Inlet: Female Luer Lock Outlet: Male Slip Luer	Inlet: Female Luer Lock Outlet: Male Slip Luer

### Ordering information:

**FB S 25 NY 022**



### Application

- HPLC sample preparation
- Routine QC analysis
- Content uniformity
- Removal of protein precipitate
- Dissolution testing
- Food analysis
- Bioscience analysis
- Environmental samples



CA Syringe Filter



PTFE Syringe Filter



PES Syringe Filter



Nylon Syringe Filter



PVDF Syringe Filter

## Enhanced Quality

No matter in manufacturing or testing, quality is a life of product as principal we are all continuously running after.

### Raw material

All the membrane is imported for some leading company who is well known in producing membrane.

It is cut into some disc membrane that guarantee exceptional integrity when filtering some sample. Then through into non-gap sealing, virgin medical PP material from CK company is placed to contain all the disc membrane.

It has superior performance to prevent leak of sample solvent and can promise membrane area being used in a large filtration area.

### QC control

After manufacturing it in shape, we still focus on testing it to judge whether it is OK and using strictly quality controlled system to forbidden shoddy product.

Every 90 in 100 can be sold to our customer in the end, 10 piece is to be died out.

The shelf life of packaged product is also monitored and controlled within our warehouses to ensure efficient stock rotation.

Each piece through this system are selected after concerning 5 factor with critical specifications set for:

- \* Bubble point
- \* Burst pressure
- \* Membrane adsorption (protein)
- \* Flow rate
- \* UV extractables (by HPLC)

## Product Information

Item	Description		Packaging (pcs/pk)
<b>Nylon66 Syringe Filter (Blue )</b>			
KASD13NY022	Pore:0.22µm	Diameter: 13mm	100
KASD13NY045	Pore:0.45µm	Diameter: 13mm	100
KASD25NY022	Pore:0.22µm	Diameter: 25mm	100
KASD25NY045	Pore:0.45µm	Diameter: 25mm	100
KASD30NY022	Pore:0.22µm	Diameter: 30mm	100
KASD30NY045	Pore:0.45µm	Diameter: 30mm	100
<b>PTFE Syringe Filter (Hydrophobic)</b>			
KASD13PTFE022H	Pore:0.22µm	Diameter: 13mm	100
KASD13PTFE045H	Pore:0.45µm	Diameter: 13mm	100
KASD25PTFE022H	Pore:0.22µm	Diameter: 25mm	100
KASD25PTFE045H	Pore:0.45µm	Diameter: 25mm	100
KASD30PTFE022H	Pore:0.22µm	Diameter: 30mm	100
KASD30PTFE045H	Pore:0.45µm	Diameter: 30mm	100
<b>PTFE Syringe Filter (Hydrophilic)</b>			
KASD13PTFE022L	Pore:0.22µm	Diameter: 13mm	100
KASD13PTFE045L	Pore:0.45µm	Diameter: 13mm	100
KASD25PTFE022L	Pore:0.22µm	Diameter: 25mm	100
KASD25PTFE045L	Pore:0.45µm	Diameter: 25mm	100
KASD30PTFE022L	Pore:0.22µm	Diameter: 30mm	100
KASD30PTFE045L	Pore:0.45µm	Diameter: 30mm	100
<b>PES Syringe Filter (Light Green)</b>			
KASD13PES022	Pore:0.22µm	Diameter: 13mm	100
KASD13PES045	Pore:0.45µm	Diameter: 13mm	100
KASD25PES022	Pore:0.22µm	Diameter: 25mm	100
KASD25PES045	Pore:0.45µm	Diameter: 25mm	100
KASD30PES022	Pore:0.22µm	Diameter: 30mm	100
KASD30PES045	Pore:0.45µm	Diameter: 30mm	100
<b>PVDF Syringe Filter (Hydrophobic)</b>			
KASD13PVDF022H	Pore:0.22µm	Diameter: 13mm	100

KASD13PVDF045H	Pore:0.45µm	Diameter: 13mm	100
KASD25PVDF022H	Pore:0.22µm	Diameter: 25mm	100
KASD25PVDF045H	Pore:0.45µm	Diameter: 25mm	100
KASD30PVDF022H	Pore:0.22µm	Diameter: 30mm	100
KASD30PVDF045H	Pore:0.45µm	Diameter: 30mm	100
<b>PVDF Syringe Filter (Hydrophilic)</b>			
KASD13PVDF022L	Pore:0.22µm	Diameter: 13mm	100
KASD13PVDF045L	Pore:0.45µm	Diameter: 13mm	100
KASD25PVDF022L	Pore:0.22µm	Diameter: 25mm	100
KASD25PVDF045L	Pore:0.45µm	Diameter: 25mm	100
KASD30PVDF022L	Pore:0.22µm	Diameter: 30mm	100
KASD30PVDF045L	Pore:0.45µm	Diameter: 30mm	100
<b>CA Syringe Filter (Cellulose Acetate )</b>			
KASD13CA022	Pore:0.22µm	Diameter: 13mm	100
KASD13CA045	Pore:0.45µm	Diameter: 13mm	100
KASD25CA022	Pore:0.22µm	Diameter: 25mm	100
KASD25CA045	Pore:0.45µm	Diameter: 25mm	100
KASD30CA022	Pore:0.22µm	Diameter: 30mm	100
KASD30CA045	Pore:0.45µm	Diameter: 30mm	100
<b>MCE Syringe Filter (Dark Green)</b>			
KASD13MCE022	Pore:0.22µm	Diameter: 13mm	100
KASD13MCE045	Pore:0.45µm	Diameter: 13mm	100
KASD25MCE022	Pore:0.22µm	Diameter: 25mm	100
KASD25MCE045	Pore:0.45µm	Diameter: 25mm	100
KASD30MCE022	Pore:0.22µm	Diameter: 30mm	100
KASD30MCE045	Pore:0.45µm	Diameter: 30mm	100
<b>PP Syringe Filter (Polypropylene)</b>			
KASD13PP022	Pore:0.22µm	Diameter: 13mm	100
KASD13PP045	Pore:0.45µm	Diameter: 13mm	100
KASD25PP022	Pore:0.22µm	Diameter: 25mm	100
KASD25PP045	Pore:0.45µm	Diameter: 25mm	100
KASD30PP022	Pore:0.22µm	Diameter: 30mm	100
KASD30PP045	Pore:0.45µm	Diameter: 30mm	100
<b>GF Syringe Filter (Glass Fiber)</b>			
KASD13GF070	Pore:0.7µm	Diameter: 13mm	100
KASD13GF120	Pore:.1.2µm	Diameter: 13mm	100
KASD25GF070	Pore:0.7µm	Diameter: 25mm	100



Kayla Africa Suppliers & Distributors

KASD25GF120	Pore:1.2µm	Diameter: 25mm	100
KASD30GF070	Pore:0.7µm	Diameter: 30mm	100
KASD30GF120	Pore:1.2µm	Diameter: 30mm	100
<b>RC syringe filter(Regenerate Cellulose)</b>			
KASD13RC022	Pore:0.22µm	Diameter: 13mm	100
KASD13RC45	Pore:.0.45µm	Diameter: 13mm	100
KASD25RC022	Pore:0.22µm	Diameter: 25mm	100
KASD25RC045	Pore:0.45µm	Diameter: 25mm	100